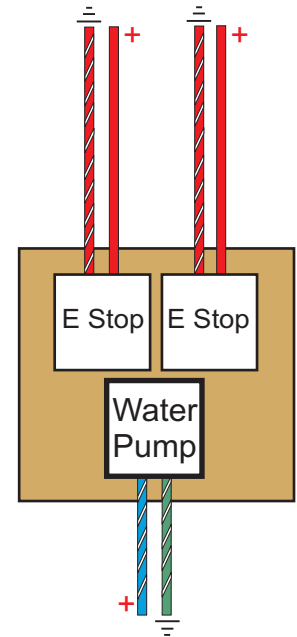
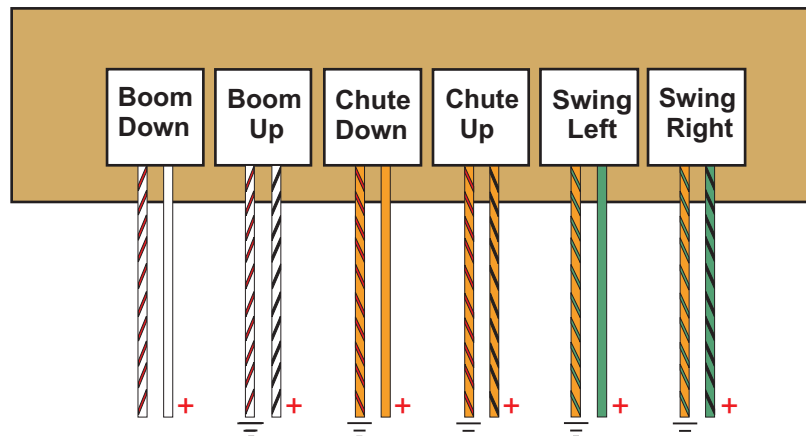
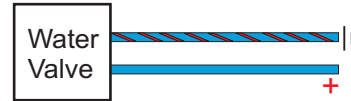


2003/04 Valve Wiring

Counter
Ground Power

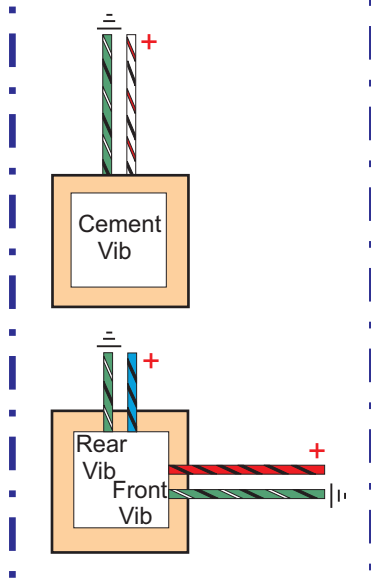
Each solenoid connector has 2 wires which are bundled in a common cable leading to the electrical control box.

Copyright
Trylon
Research Inc.

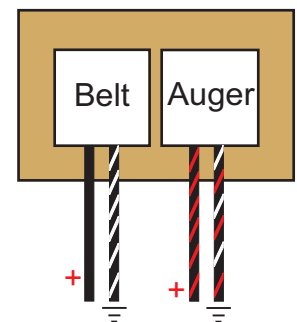
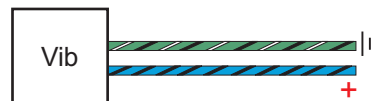


Prox Sensor

Optional Hydraulic Vibrators



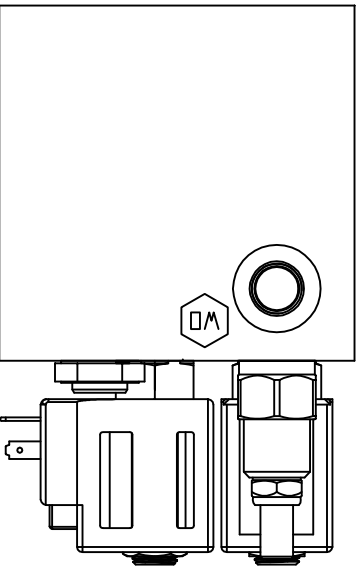
Pneumatic Vibrator



+ This symbol indicates power input to the connector. Each wire is connected to the terminal next to the LED light.

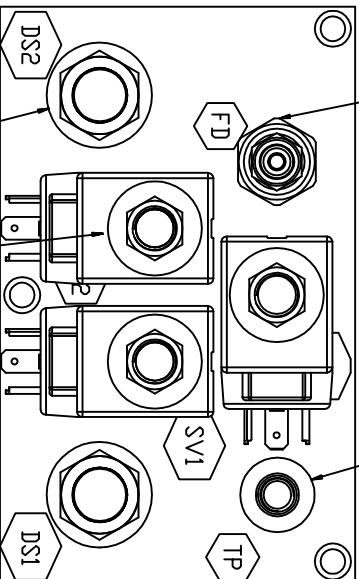
— This symbol indicates the ground connection for the connector. Each wire is connected to the terminal next to the red capacitor.

The third and widest pin is not used.



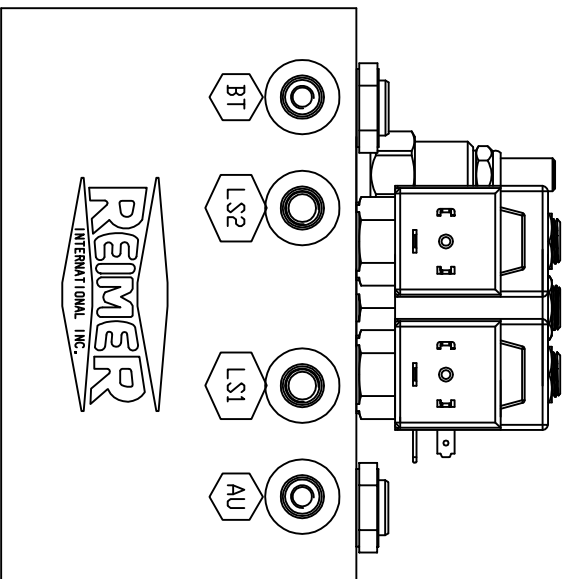
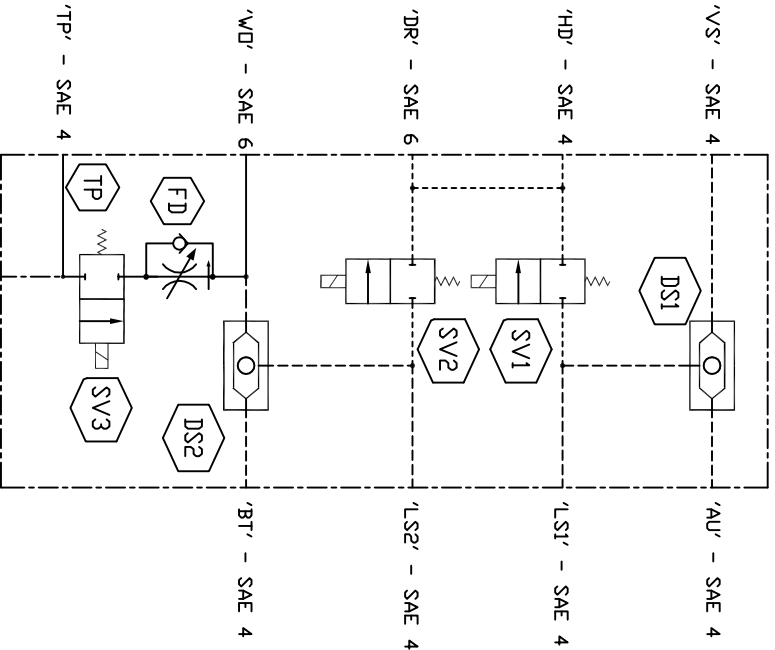
DS1 & DS2 – Shuttling Valve Cartridge
DSV2-8-B-0

SV1, SV2, & SV3 – Solenoid Valve Cartridge
SV4-8-C-0-00



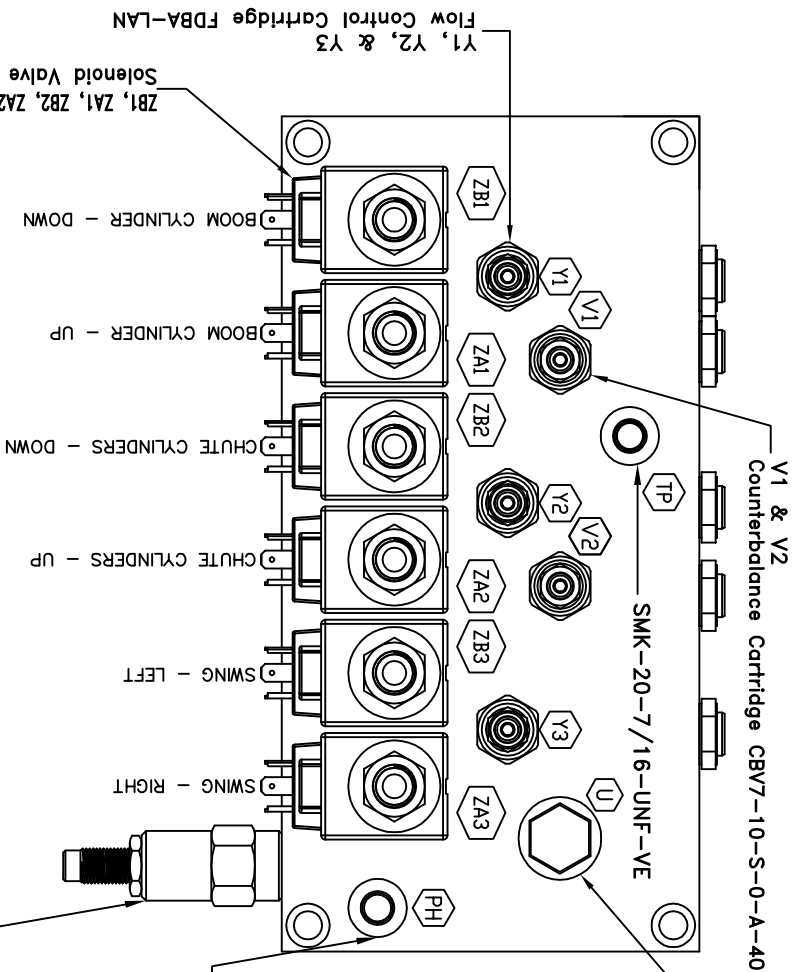
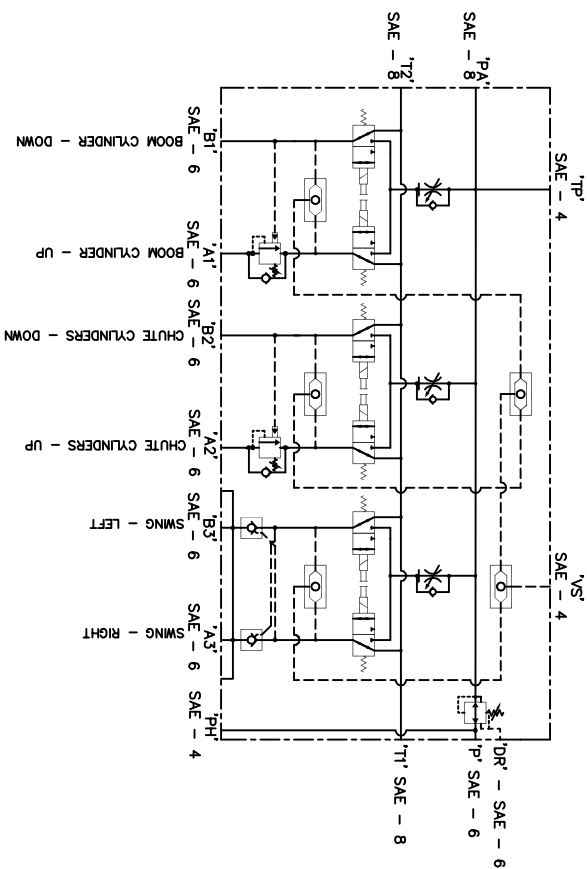
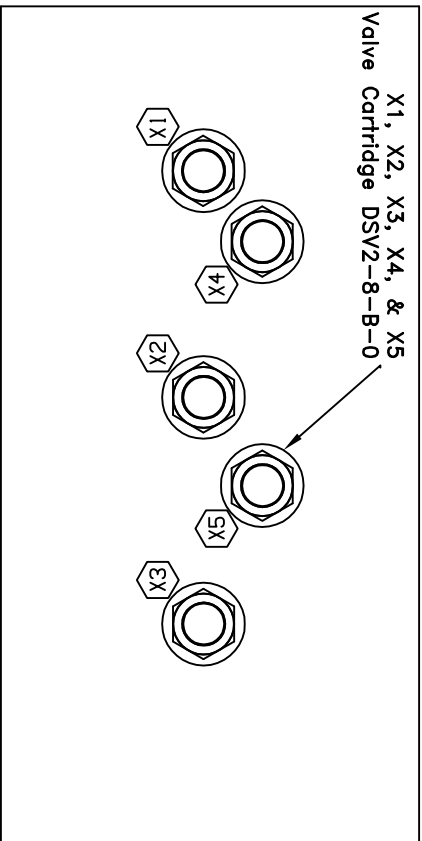
FD – Flow Control Cartridge
FD8A-LAN

TP – Test Port
SMK-20-7/16-UNF-VE

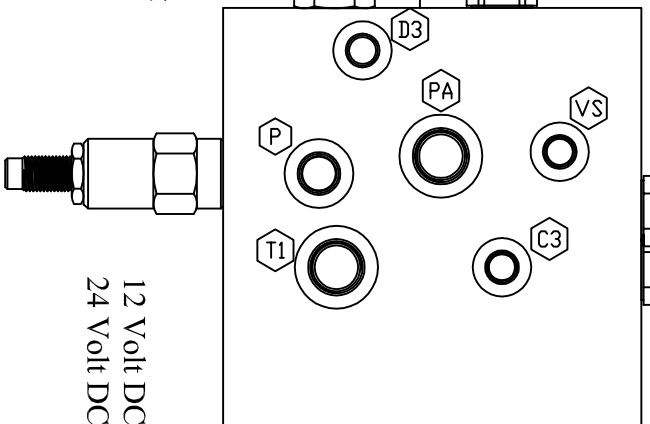
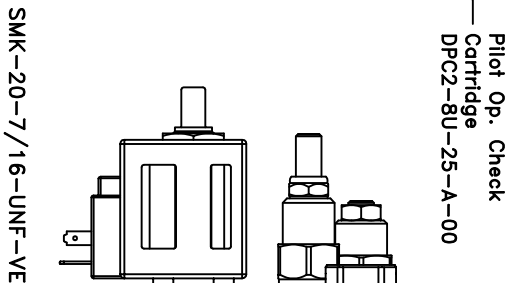


12 Volt DC Coil # 02-160690
24 Volt DC Coil # 02-160691

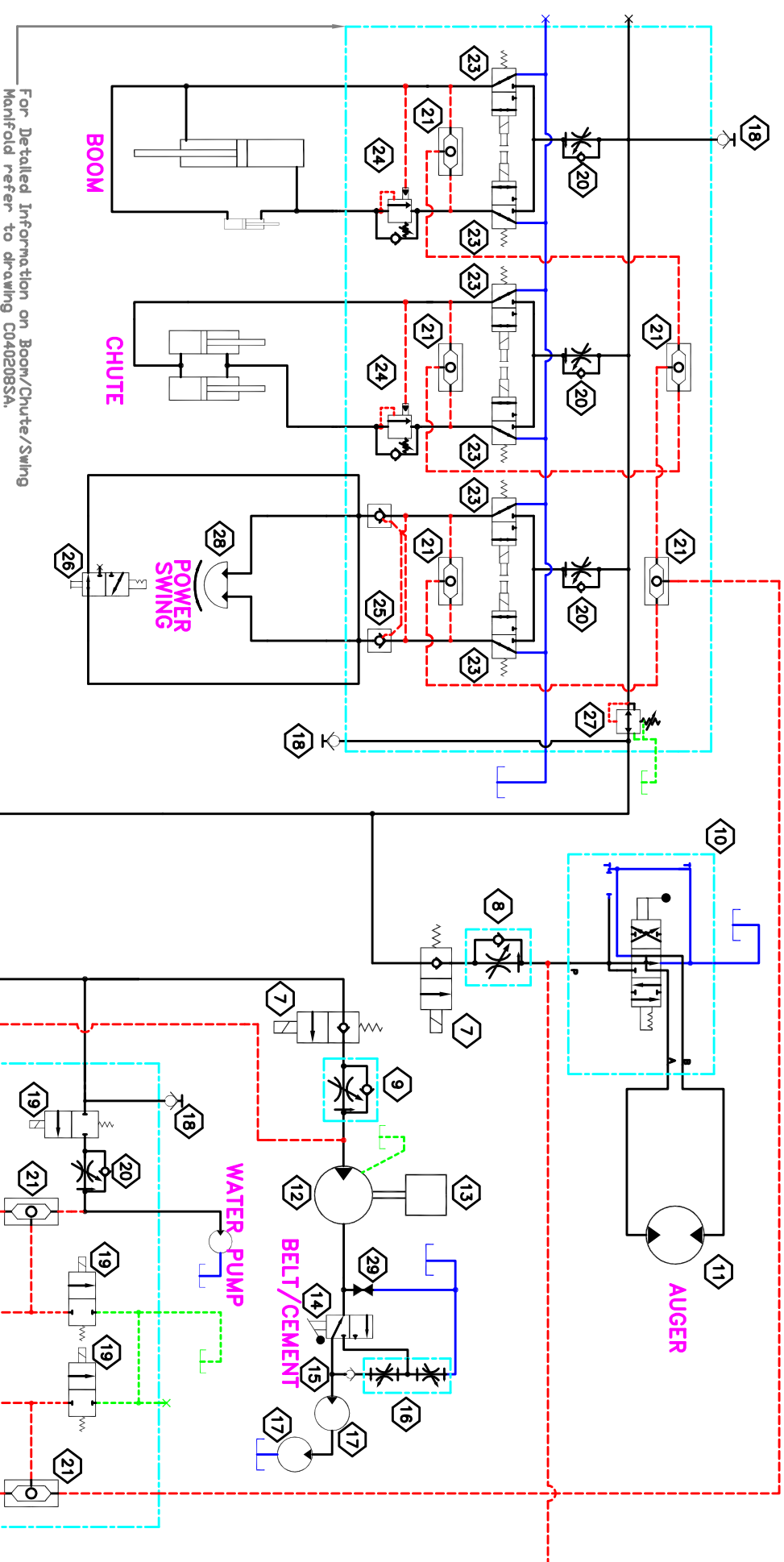
		REIMER INTERNATIONAL PO Box 1168, Didsbury, AB, Canada T0M 0W0	
Pilot Signal / E-Stop / Water Pump Manifold SCHEMATIC / GENERAL LAYOUT			
G. Green	SIZE / PCD NO. C	DWG NO. C 0 3 0 1 9 6 S A	REV 0
December 15, 2003	SCALE NTS	SHEET 1 OF 1	



Pressure Reducing Cartridge
PRV12-10-S-0-30/

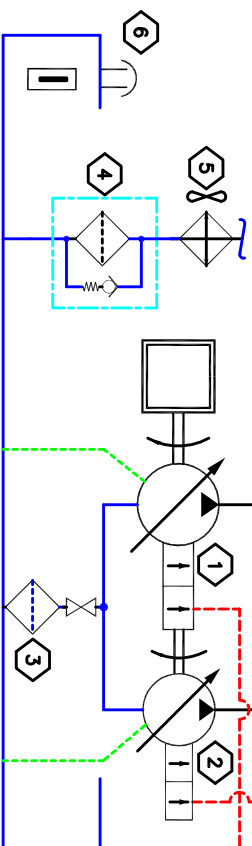



REIMER INTERNATIONAL PO Box 1168, Dubuay, AB, Canada T0M 0W0			
Boom / Chute / Swing Manifold SCHEMATIC / GENERAL LAYOUT			
G. Green June 10, 2004	SIZE / PCD NO. C	DWG NO. C 0 4 0 2 0 8 S A	REV 0
SCALE NTS	SHEET 1 OF 1		



Legend

- High Pressure Line/ Component Symbol
- - - Low Pressure Drain Line
- - - Assembly - Items enclosed contain multiple components.
- Low Pressure Tank Line
- - - High Pressure Pilot Signal Line
- # Bill of Material Reference
- Function Name



		REIMER INTERNATIONAL PO Box 1168, Dubuque, AB, Canada T0M 0W0	
10yd./12yd. Batch Concrete Mixer HYDRAULIC SCHEMATIC		SIZE / PUMP NO. C	DWG. NO. C 0 4 0 2 0 7 S
G. Green	SCALE NTS	SHEET 1 OF 1	REV 0
May 11, 2004			

BILL OF MATERIAL			
ITEM	QTY	DESCRIPTION	MFG
1	1	70553-RAZ Righthand Rotation Auger Pump	Eaton
1A	opt.	70553-LAR Lefthand Rotation Auger Pump	Eaton
2	1	70423-RBT Righthand Rotation Belt Pump	Eaton
2A	opt.	70423-LBG Lefthand Rotation Belt Pump	Eaton
3	1	P50-2-100-RV3 Suction Strainer	Flo-Ezy
4	1	HH2544A24MPSAGD Return Filter w/Element, Indicator Gauge, & Diffuser	Pall
4A	spare	HC2544FMP9H Spare Filter Element	Pall
5	1	038682 Fan Operated Cooler with Thermostat Switch - 12V	Hayden
5A	opt.	038706 Fan Operated Cooler with Thermostat Switch- 24V	Hayden
6	1	ABGP-1000-3-HN-CHAIN Breather Cap	Flo-Ezy
7	2	SV1-16-C-0-00 Solenoid Valve ON/OFF Belt and Auger Cartridge Only	Eaton
7A	2	02-178086 12 VDC DIN Coil	Eaton
7A.1	opt.	02-178087 24 VDC DIN Coil	Eaton
7B	2	5F660-251-USOA Molded DIN Connector with wire	Canfield
7C	2	566149 - SAE 12 Body for ON/OFF Belt and Auger Cartridge	Eaton
8	1	PCM1220S Flow Control for Auger Speed	Parker
9	1	PCM1020S Flow Control for Belt Speed	Parker
10	1	SD14/1(SV)211L/SAE12 Forward/Reverse Valve for Auger	Walvoil
10A	1	AL01-M10-200 Valve Handle	Walvoil
11	1	104-1034 Regular Speed Motor for Auger	Eaton
11A	opt.	104-1033 High Speed Motor for Auger	Eaton
12	1	106-1012 Regular Torque Motor for Belt	Eaton
12A	opt.	106-1013 High Torque Motor for Belt	Eaton
13	1	16FF1-05-6-A36 Planetary Reducer w/16E Sun Gear	Heco
14	1	DH 5/3 B SAE Cement Mix Selector Valve	Walvoil
15	1	CVH05-0375N Check Valve	DMIC
16	1	FP56-3/4 Proportional Flow Divider for Cement System	Brand
17	2	104-1228 Cement Augers Motor	Eaton
18	3	SMK20-7/16 UNF-VE Test/Gauge Port Quick Disconnect	Stauff
19	3	SV4-8-C-0-00 Solenoid ON/OFF E-Stop and Water Pump - Cartridge Only	Eaton
19A	3	02-160690 12 VDC Coil	Eaton
19A.1	opt.	02-160691 24 VDC Coil	Eaton
19b	3	5J664-251-EU0A Molded Din Connector	Canfield
20	4	FDBA-LAN Flow Control for Water Pump, Boom, Chute, Swing	Sun
21	7	DSV2-8-B-0 Shuttle Valve for Load Sense Signals	Eaton
22	1	HSP-1000-2-5 Check Valve for Belt Load Sense	PCI
23	6	SV4-5299-0 Boom/Chute/Swing Solenoid Valve 3way/2pos - Cartridge Only	Eaton
23A	6	02-178086 12 VDC DIN Coil	Eaton
23A.1	opt.	02-178087 24 VDC DIN Coil	Eaton
23B	6	5F660-251-USOA Molded DIN Connector with wire	Canfield
24	2	CBV7-10-S-0-A-40 3:1 Ratio Counterbalance Valve - Cartridge Only	Eaton
25	1	DPC2-8U-25-A-00 Dual Pilot Operated Check Valve - Cartridge Only	Eaton
26	1	MRV3-10-K-0 Manual Free Swing on Swing Function - Cartridge Only	Eaton
26A	1	566162 Body for Free Swing Valve - 6 SAE	Eaton
27	1	PRV12-10-S-0-30/ Pressure Reducing Valve - Cartridge Only	Eaton
28	1	L2025 Rotary Actuator for Swing Function	Helac
29	1	3/8" NPT - Ball Valve - 2500 psi	PCI